



### The Future of Terminal Emulation is Now!

1. Graphical User Experience
2. "Future Proof" Apps
3. No Changes to Your App
4. No Programming Required
5. Reliability
6. Security
7. Performance
8. Multi OS/Device Support
9. Architectural Advantage
10. Transferable, Concurrent Connection Licensing
11. Sharp Focus on TE



## 11 Reasons to Choose StayLinked SmartTE

There are great **productivity improvements** to be had by implementing an easy-to-use, graphical data collection application that supports modern, touchscreen devices. However, there are high costs, long implementation cycles, and application performance risks associated with migrating away from fast and reliable Terminal Emulation "green screen" applications.

With StayLinked SmartTE you get the best of both worlds with **No-Risk Application Modernization**. You continue to realize the speed, reliability, and security of StayLinked TE while increasing productivity with the addition of an intuitive, modern user experience.

1. Easily add a modern, **graphical user experience** customized for your touchscreen data collection devices. New user interface screens are generated automatically or created in the screen designer to suit your needs.
2. **"Future Proof" your TE applications** – With a single StayLinked license you get the most reliable, secure, and fast terminal emulation with the option of adding graphical screens immediately or when it makes the most sense for you in the future. Migrate at a pace that makes sense without additional license purchases.
3. **No Changes to your existing application** – With SmartTE you continue to use your existing, high speed TE application with no revisions to that important code. The new SmartTE graphical screens operate independent of the mission-critical host application code.
4. **No programming required** – SmartTE requires no specialized programming skills. Your application screens are automatically transformed into touchscreen-compatible screens or, if you require screen customization, you can use the StayLinked screen designer to enhance your screens further.
5. **Reliability** - StayLinked eliminates the #1 productivity killer in the warehouse - dropped terminal emulation sessions. In fact, StayLinked is as reliable as the host server that hosts your data collection application.
6. **Security** - With Blowfish encryption, firewall-friendly design, application lock-down, and support for port filter and access list controls, StayLinked ensures the integrity of your data and communications.
7. **Performance** – StayLinked delivers the fastest TE in the industry and SmartTE is built upon the same, high performance architecture.
8. **Multi OS/Device Manufacturer support** – StayLinked SmartTE supports the latest Android and iOS devices with Windows 10 Mobile coming soon.
9. **Architectural Advantage** - Server-based design delivers TE session persistence, centralized administration/configuration, and troubleshooting.
10. **Fully transferable, concurrent connection licensing** - Your StayLinked licenses will work forever on any device you choose. Additionally, you only need licenses for the maximum number of simultaneous server connections and not for every mobile device in service.
11. **Sharp focus on Terminal Emulation and related technologies** – StayLinked is 100% committed to delivering the world's best terminal emulation solution, customer support, and associated technology. TE is not a side product line for us – it is what we think about all day, every day.

## Features of Terminal Emulation for the Smartphone Generation

**No Changes to your existing application** – Screens are dynamically transformed. Administrators can then fine-tune the screens as necessary.

**No programming required** – Administrators can edit dynamically generated screens through the Integrated screen designer.

**Rich, graphical screens** – End users see a familiar user interface supporting such actions as swipe, pinch, buttons, fields and more.

**Auto-device detection** – upon installation, the SmartTE client will adapt itself to the specific device's unique capabilities.

**Ultra fast performance** – SmartTE delivers StayLinked's industry-best application speed.

**Rapid Implementation** – Dynamically generate screens, test, and implement in a matter of weeks.

**Full support of IBM and VT applications** – 3270, 5250, VT100, VT220

**Support for Android, iOS, and Windows** – SmartTE supports multiple smart operating systems from a vast array of device manufacturers.

**No Dropped Connections** – SmartTE's unique architecture ensures telnet sessions are never dropped, even when devices are re-booted, its battery dies, or the user roams between WIFI and cellular networks.

**Strongest Security in the market** - StayLinked delivers the most secure Terminal Emulation solution available with SSHv2, Blowfish encryption, firewall-friendly design, application lock-down, and port filtering.

### STAYLINKED ULTRA-THIN CLIENT

The thin client communicates with the host-resident StayLinked server to communicate keystrokes and scans to the emulation session and then to your application, and transmits only net changes to the emulation screen back to the wireless device. Think of it as the mobile device running a remote control session of the telnet/SSH session running on the host computer.

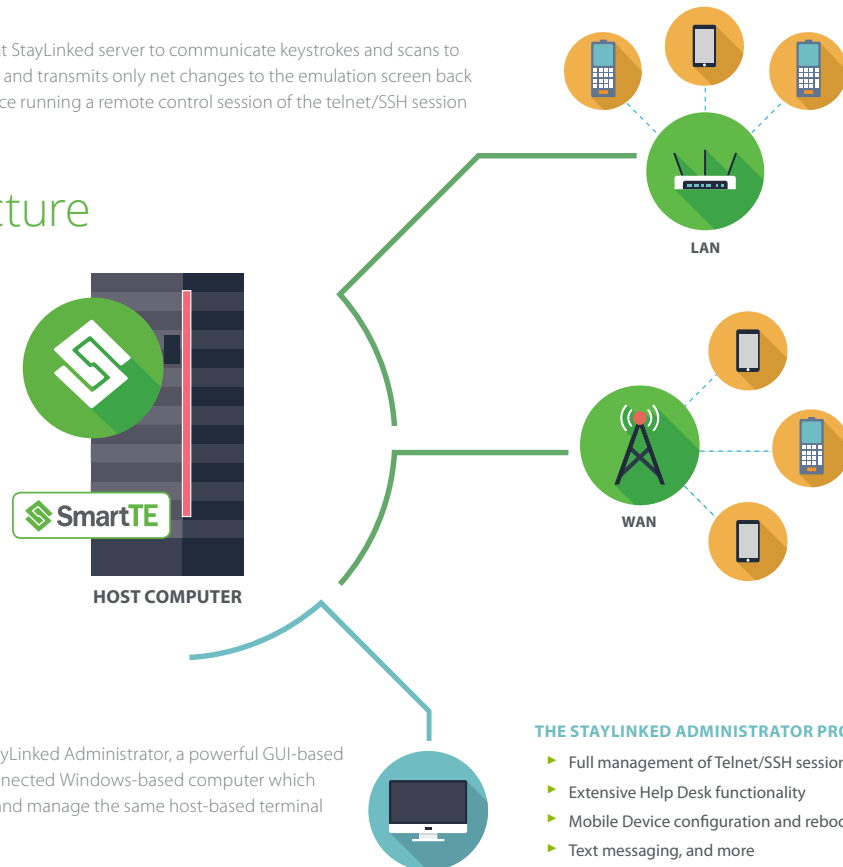
## StayLinked Architecture

### STAYLINKED SERVER

The StayLinked server runs all telnet sessions on the same server as the host system. This results in the telnet sessions achieving the same reliability as the host computer, after greater than 99.9% uptime.

### SmartTE

Dynamically modernized screens with increased ease-of-use and end-user productivity.



### STAYLINKED ADMINISTRATOR

An integral part of the StayLinked solution is the StayLinked Administrator, a powerful GUI-based console which can be installed on any network-connected Windows-based computer which can access the password-protected Administrator, and manage the same host-based terminal sessions the end user is seeing on his screen.

#### THE STAYLINKED ADMINISTRATOR PROVIDES:

- ▶ Full management of Telnet/SSH sessions
- ▶ Extensive Help Desk functionality
- ▶ Mobile Device configuration and reboot
- ▶ Text messaging, and more

### ABOUT STAYLINKED

For over 20 years we have been delivering world-class solutions for mission-critical, host-based systems in the warehousing, manufacturing, transportation, and retail industries. It was our deep understanding of these host-based systems that led our team of technology experts to introduce a new paradigm in terminal emulation for mobile devices. The StayLinked team has earned our company a reputation for high-quality products that Just Work and a level of customer support that creates the highest level of customer loyalty.